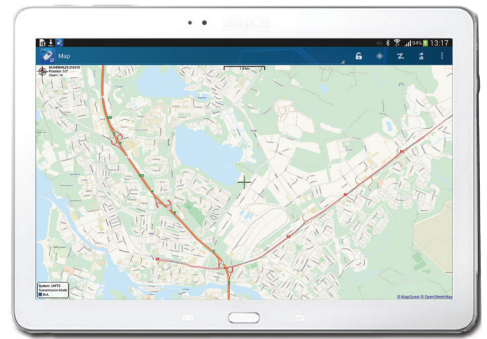


Keysight Technologies Nemo Handy

Fast, Efficient, On-the-Go Network Measurement and Troubleshooting



NEMO

Nemo Handy provides you with smart and discreet solutions for thorough and advanced measurement and optimization of wireless air interface and mobile application Quality-of-Service (QoS) and Quality-of-Experience (QoE).

Improve your wireless network measurements

Nemo Handy has set the standard for handheld network measurement devices since 2005 and continues to do so today. Make outdoor and indoor wireless network measurements with a smart and inconspicuous application installed on an android-based device.

- Create complex measurement scripts more easily and effectively
- Reduce test time with the intuitive user interface
- Test FTP, HTTP, Browsing, YouTube, Facebook, and more
- Use map navigation based on Google Maps
- Geocode indoor floorplans on top of Google Maps
- Enhance system integration with the open Nemo file format; integrate with Nemo post-processing tools or third-party post-processing tools
- Perform audio quality and video quality tests: POLQA, PESQ, PEVQ-S
- Combine scanning and indoor measurements with portable, battery-operated DRT4311B and SeeGull IBflex scanners
- Use with Qualcomm and Samsung Shannon chipsets
- Streamline operations and improve responsiveness with the Nemo Cloud option, a cloud-based platform for centralized remote control
- Create fast and efficient reports in the field with the Nemo Instant Report option

Perform measurements on the widest selection of Android-based devices on the market

The handheld Nemo Handy products are highly suitable for performing measurements both outdoors and in busy, crowded indoor spaces while being simultaneously used as a regular mobile phone. Nemo Handy products provide you with the best real-time measurement visualization on the handheld market.

In addition to a rich variety of real-time displays, all RF and signaling data is logged to the phone's internal storage. Log files are made available in Nemo file format for easy post-processing with Nemo post-processing tools or third-party post-processing tools.

Use Nemo Handy on

- Samsung Galaxy S7
- Samsung Galaxy S6 edge
- Samsung Galaxy S6
- Samsung Note 4
- Samsung Galaxy S5 4G+
- Sony Xperia Z5
- And more

Anite is now part of **Keysight Technologies**



Unlocking Measurement Insights



Greater Mobility, Economy and Ease-Of-Use

Nemo Handy offers four product editions designed to give you better real-time measurement visualization. Reduce test time and create complex measurement scripts with our intuitive user interface

Nemo Handy Field Test (FT)

Perform instant, on-the-spot measurements and diagnostics using your cell phone as the measurement device.

Nemo Handy Pro

Improve quality of service with a fully-fledged handheld measurement tool with scripts, map and playback support. Optional features in Nemo Handy Pro include POLQA and PESQ voice quality measurements, PEVQ-S video-quality measurements, and preconfigured or remote-controlled autonomous measurements.

Nemo Handy QualityApp

Assess the quality of end-user experience with an advanced application that helps operators and service providers analyze and understand the perceived end-user experience of mobile services and applications. The application works on any Android device and provides a selected set of RF parameters.

Nemo Handy Autonomous

Perform autonomous measurements or select preconfigured measurement scenarios for unattended network testing with remotely controlled field measurement units.

Most Widely Deployed Handheld Tool on the Market

Nemo Handy operates efficiently on the latest Android-based terminals, such as Samsung Galaxy S7. Nemo Handy measures and monitors wireless networks and mobile application quality of service and quality of experience. Nemo Handy enables voice quality measurements based on the POLQA and PESQ algorithms in both the uplink and downlink directions and in super wideband and narrowband measurement modes. Individual MOS scores are displayed in real time.

Measure and monitor

- GSM
- CDMA
- EVDO
- WCDMA
- HSDPA
- HSUPA
- HSPA+
- LTE/LTE Cat 12
- WiFi (HetNet)

www.keysight.com/find/nemo